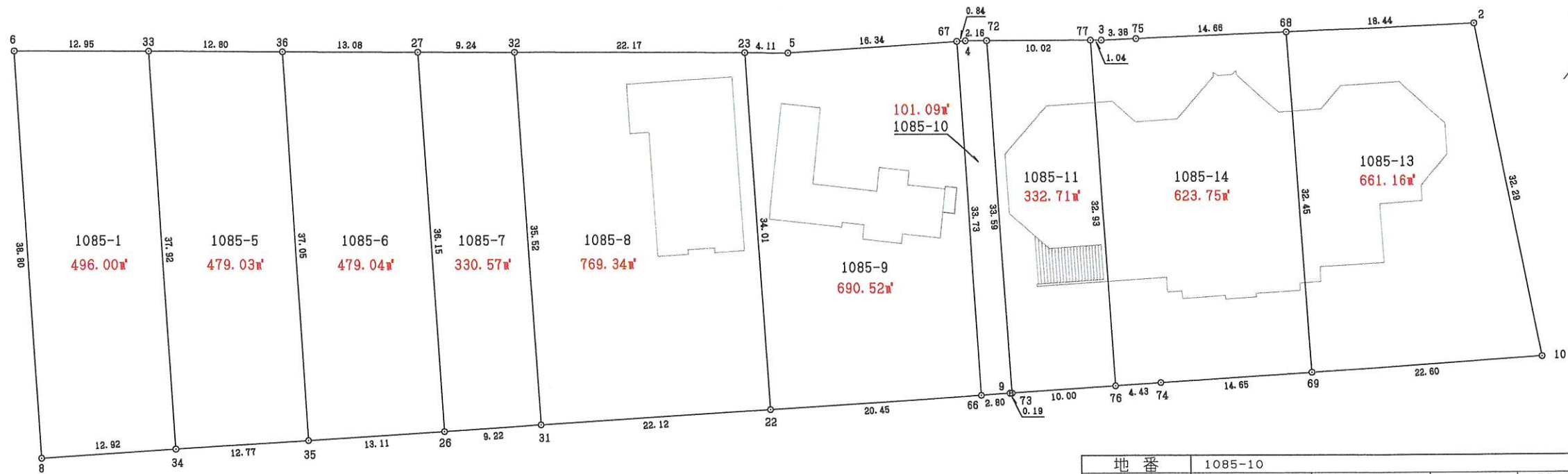


分割図

Scale = 1 : 500



座標求積表

地番測点	1085-1	X	Y	$X_{n+1}-X_{n-1}$	$Y_n (X_{n+1}-X_{n-1})$
8	964.222	1025.533	-19.164	-19653.314412	
34	973.156	1034.877	36.393	37662.278661	
33	1000.615	1008.719	19.164	19331.090916	
6	992.320	998.765	-36.393	-36348.054645	
			倍面積	992.000520	
			面積	496.0002600	
			地積	496.00	

地番測点	1085-5	X	Y	$X_{n+1}-X_{n-1}$	$Y_n (X_{n+1}-X_{n-1})$
34	973.156	1034.877	-18.628	-19277.688756	
35	981.987	1044.114	35.657	37229.972898	
36	1008.813	1018.557	18.628	18973.679796	
33	1000.615	1008.719	-35.657	-35967.893383	
			倍面積	958.070555	
			面積	479.0352775	
			地積	479.03	

地番測点	1085-6	X	Y	$X_{n+1}-X_{n-1}$	$Y_n (X_{n+1}-X_{n-1})$
35	981.987	1044.114	-17.759	-18542.420526	
26	991.054	1053.596	35.202	37088.686392	
27	1017.189	1028.609	17.759	18267.067231	
36	1008.813	1018.557	-35.202	-35855.243514	
			倍面積	958.089583	
			面積	479.0447915	
			地積	479.04	

地番測点	1085-7	X	Y	$X_{n+1}-X_{n-1}$	$Y_n (X_{n+1}-X_{n-1})$
26	991.054	1053.596	-19.761	-20820.110556	
31	997.428	1060.262	32.053	33984.577886	
32	1023.107	1035.711	19.761	20466.685071	
27	1017.189	1028.609	-32.053	-32970.004277	
			倍面積	661.148124	
			面積	330.5740620	
			地積	330.57	

地番測点	1085-8	X	Y	$X_{n+1}-X_{n-1}$	$Y_n (X_{n+1}-X_{n-1})$
31	997.428	1060.262	-10.388	-11014.001656	
22	1012.719	1076.255	39.876	42916.744380	
23	1037.304	1052.749	10.388	10935.956612	
32	1023.107	1035.711	-39.876	-41300.011836	
			倍面積	1538.687500	
			面積	769.3437500	
			地積	769.34	

地番測点	1085-9	X	Y	$X_{n+1}-X_{n-1}$	$Y_n (X_{n+1}-X_{n-1})$
23	1037.304	1052.749	-27.222	-28657.933278	
22	1012.719	1076.255	-10.451	-11247.941005	
66	1026.853	1091.038	38.518	42024.601684	
67	1051.237	1067.724	13.088	13974.371712	
5	1039.941	1055.914	-13.933	-14712.049762	
			倍面積	1381.049351	
			面積	690.5246755	
			地積	690.52	

地番測点	1085-10	X	Y	$X_{n+1}-X_{n-1}$	$Y_n (X_{n+1}-X_{n-1})$
72	1053.209	1069.991	22.893	24495.303963	
4	1051.820	1068.334	-1.972	-2106.754648	
67	1051.237	1067.724	-24.967	-26657.865108	
66	1026.853	1091.038	-22.445	-24488.347910	
9	1028.792	1093.066	2.074	2267.018884	
73	1028.927	1093.207	24.417	26692.835319	
			倍面積	202.190500	
			面積	101.0952500	
			地積	101.09	

地番測点	1085-11	X	Y	$X_{n+1}-X_{n-1}$	$Y_n (X_{n+1}-X_{n-1})$
73	1028.927	1093.207	17.370	18989.005590	
72	1053.209	1069.991	30.721	32871.193511	
77	1059.648	1077.672	-17.370	-18719.162640	
76	1035.839	1100.435	-30.721	-33806.463635	
			倍面積	665.427174	
			面積	332.7135870	
			地積	332.71	

地番測点	1085-14	X	Y	$X_{n+1}-X_{n-1}$	$Y_n (X_{n+1}-X_{n-1})$
75	1062.603	1080.975	-12.166	-13151.141850	
3	1060.322	1078.476	-2.955	-3186.896580	
77	1059.648	1077.672	-24.483	-26384.643576	
76	1035.839	1100.435	-20.747	-22830.724945	
74	1038.901	1103.637	13.193	14560.282941	
69	1049.032	1114.233	33.587	37423.743771	
68	1072.488	1091.806	13.571	14816.899226	
			倍面積	1247.518987	
			面積	623.7594935	
			地積	623.75	

地番測点	1085-13	X	Y	$X_{n+1}-X_{n-1}$	$Y_n (X_{n+1}-X_{n-1})$
10	1064.652	1130.567	35.894	40580.571898	
2	1084.926	1105.432	7.836	8662.165152	
68	1072.488	1091.806	-35.894	-39189.284564	
69	1049.032	1114.233	-7.836	-8731.129788	
			倍面積	1322.322698	
			面積	661.1613490	
			地積	661.16	